

Ethical and Effective Use of Artificial Intelligence like ChatGPT in Academic Research and Writing: Insights and Strategies

Objective

- Understand how to use AI tools, including ChatGPT, to increase efficiency in research and academic writing
- List of possibilities for tools and tool research online
- Explore the ethical implications of AI in research
- Formulate personal ethical guidelines for AI use and best practices for transparency in the scientific community about the use of these tools

Description

This online workshop explores the ethical and effective use of AI in academic research, with a focus on ChatGPT, while also providing an overview of various other AI tools and tool combination.

Participants will learn:

- Solving common problems of academic writing processes with ChatGPT (idea generation, text optimization, testing text coherence, overcoming writing blocks, etc.)
- Broad overview of diverse AI tools: understanding the use of different AI tools in research
- Structuring and problem-solving: collaborating with presented AI tools for more effective academic work and for identifying and resolving common issues that arise in academic work
- Ethical considerations of AI: responsible integration of AI in academic settings
- Interactive exercises and case studies will allow participants to apply these concepts to real research scenarios.

Methodology

- Interactive presentations and discussions
- Hands-on exercises with AI tools
- Real-world case studies and examples

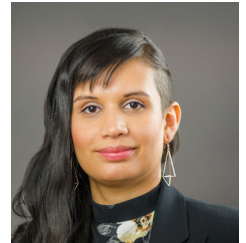
Conditions

- No prior experience with AI needed
- Access to a computer and internet
- Specific AI tool accounts required for participation will be communicated before the workshop

Organizational Information

Language / Format	English / Online
Target group	Doctoral Candidates at all stages and Postdocs (R2/R3) from all faculties
Date	Thursday-Friday, 4-5 July 2024, 9:00 – 12:00
Registration	For registration click here

Trainer



Dr. Maia George

Maia George
Wissenschaftscoaching,
Jena

Dr. Maia George, an academic coach and former researcher, specializes in academia's new work, scholarship applications, transitioning to industry via social media, and effective science communication. Former Research Assistant and Fellow at LehreLernen, University of Jena, Dr. George is also a member of the German Academic Scholarship Foundation's admission committee.